



Uni Brother IV OEM Chip
Reset Operating Instruction
V1.0

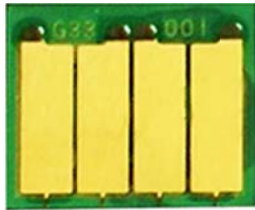
Contents

- 1. Features..... 2
- 2. Brother IV Series Blank Chip and JIG 2
- 3. Operating Procedure..... 2
- 4. Notices 3
- 5. Code Hinting and Meanings 4
- 6. Model List..... 5

1. Features

Only reset to the exact model without changing the color, yield and region.
Non-OEM hint displays in printer upon installation after chip is reset.

2. Brother IV Series Chip and JIG



Chip



JIG

3. Operating Procedure

OEM RESET & OEM CHECK & OEM SCAN

Ensure the test head is contacted with the chip correctly.


Click  in the main interface to scan chips.



Figure 1



Figure 2

After the chip is successfully scanned, you can enter into the final operation interface. Click to switch functions "RESET", "CHECK" and "SCAN", and press the "Confirm" button on the JIG or Unismart device to carry out the chip operation.

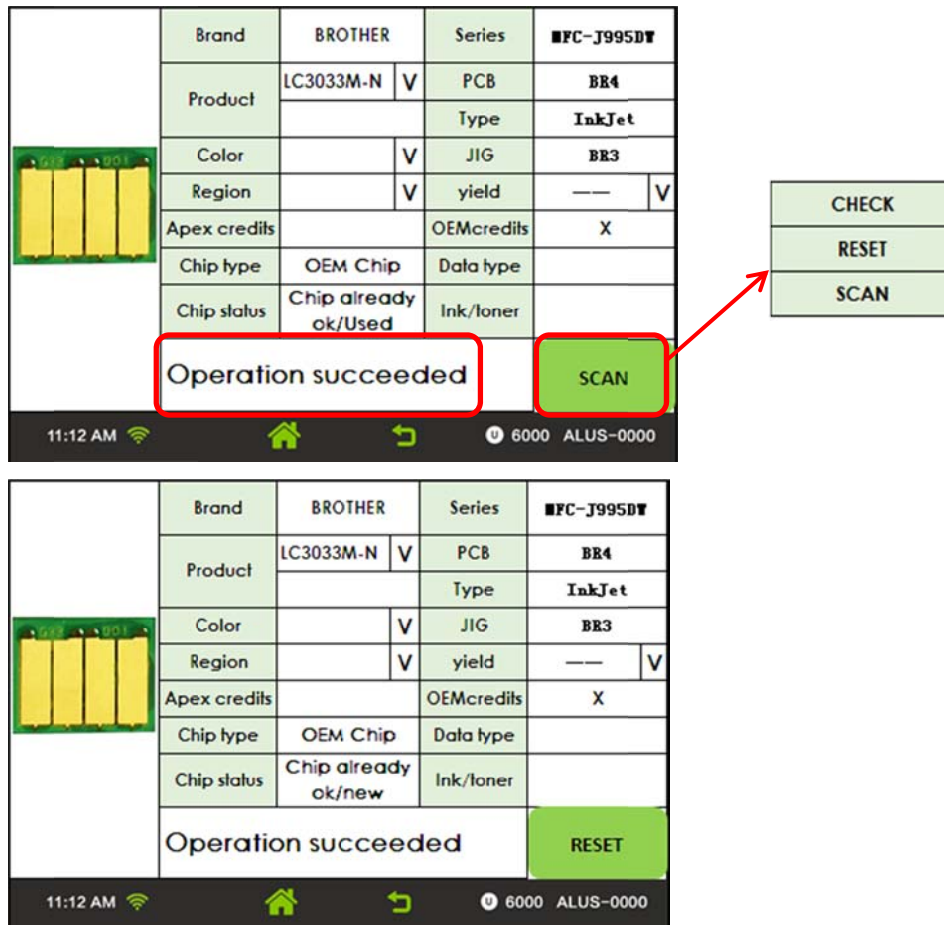


Figure 3

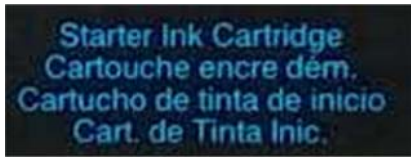
Notes:

- ◆ Using button to scan and check the chip information can only be realized in the main interface(Figure 2) and final interface(Figure 3).
- ◆ The operation procedure above is for LC3033M reset and it can also be applied to other PCB.

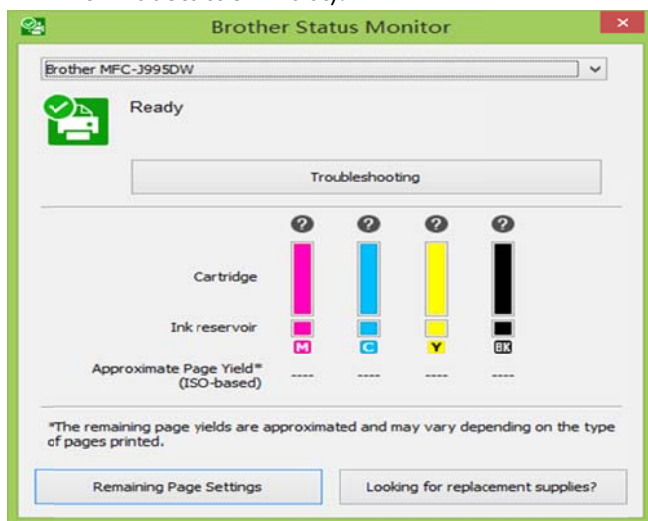
4. Notices

- ◆ At present, there is no anomaly in the installation of the starter cartridge. However, according to our previous experience, it cannot be excluded that the starter cartridge may not be recognized if the printer firmware is upgraded or it is used on a new printer.
- ◆ The page yield of starter cartridge is less than that of commercial cartridge, thus it will cause the toner level to decrease significantly at a certain time;
- ◆ You can identify the starter cartridge from commercial cartridges by a special

icon under the Model on label, which is shown as below picture:



- ◆ The printer has a physical ink detection device. If the ink volume of a recycled ink cartridge is not consistent with the OEM ink cartridge's ink volume or the waste ink is high, printer's use effect will be affected.
- ◆ It will display "non-OEM cartridge" for all the reset cartridges as installed in printer, while the toner level shows " ? " as below picture (however it is in normal status in fact).



5. Code Hinting and Meanings

Coding Hinting	Meaning	Analysis
Chip Already OK	Chip Already OK	/
Operation failed	Operation failed	①The chip is damaged. ②The JIG's probe does not align the contactors on the chip. ③The JIG is placed in the opposite direction.
Operation succeeded	Operation succeeded	/
Chip not match	Chip doesn't match	The chip that needs to be reset cannot select the current model.
Data not match	Data not match	①The chip is installed and its data is rewritten by the printer. ②The detected chip model doesn't match with the selected model on the Unismart device.
Chip is locked	Chip is locked	/

Chip's useful life is over	Chip's useful life is over	/
Brand new chip	Brand new chip	/
No chip detected	No chip detected	/
Wrong JIG ID	Wrong JIG ID	/
Not found JIG	Not found JIG	/

6. Model List

PCB Code	JIG	Brand	Apex Product Code	OEM Product Code	For Use with Printers
BR4	BR3	Brother	AJB-LC3033BK-N	LC3033BK-N	Brother MFC-J995DW
			AJB-LC3033C-N	LC3033C-N	
			AJB-LC3033M-N	LC3033M-N	
			AJB-LC3033Y-N	LC3033Y-N	
			AJB-LC3035BK-N	LC3035BK-N	
			AJB-LC3035C-N	LC3035C-N	
			AJB-LC3035M-N	LC3035M-N	
			AJB-LC3035Y-N	LC3035Y-N	
			AJB-LC3037BK-N	LC3037BK-N	Brother MFC-J5845DW/ J5945DW/J6545DW/J6945DW
			AJB-LC3037C-N	LC3037C-N	
			AJB-LC3037M-N	LC3037M-N	
			AJB-LC3037Y-N	LC3037Y-N	
			AJB-LC3039BK-N	LC3039BK-N	
			AJB-LC3039C-N	LC3039C-N	
			AJB-LC3039M-N	LC3039M-N	Brother MFC-J1500N/DCP-J988N
			AJB-LC3039Y-N	LC3039Y-N	
			AJB-LC3133BK-N	LC3133BK-N	
			AJB-LC3133C-N	LC3133C-N	
			AJB-LC3133M-N	LC3133M-N	
			AJB-LC3133Y-N	LC3133Y-N	
			AJB-LC3135BK-N	LC3135BK-N	
			AJB-LC3135C-N	LC3135C-N	
			AJB-LC3135M-N	LC3135M-N	Brother MFC-J6999CDW/ J6997CDW/HL-J6000CDW
			AJB-LC3135Y-N	LC3135Y-N	
			AJB-LC3137BK-N	LC3137BK-N	
			AJB-LC3137C-N	LC3137C-N	
			AJB-LC3137M-N	LC3137M-N	
			AJB-LC3137Y-N	LC3137Y-N	

			AJB-LC3139BK-N	LC3139BK-N	Brother DCP-J1100DW/MFC-J1300
			AJB-LC3139C-N	LC3139C-N	
			AJB-LC3139M-N	LC3139M-N	
			AJB-LC3139Y-N	LC3139Y-N	
			AJB-LC3233BK-N	LC3233BK-N	
			AJB-LC3233C-N	LC3233C-N	
			AJB-LC3233M-N	LC3233M-N	
			AJB-LC3233Y-N	LC3233Y-N	
			AJB-LC3235BK-N	LC3235BK-N	Brother HL-J6000DW/J6100DW/ MFC-J5945DW/J6945DW/J6947DW
			AJB-LC3235C-N	LC3235C-N	
			AJB-LC3235M-N	LC3235M-N	
			AJB-LC3235Y-N	LC3235Y-N	
			AJB-LC3237BK-N	LC3237BK-N	
			AJB-LC3237C-N	LC3237C-N	
			AJB-LC3237M-N	LC3237M-N	
			AJB-LC3237Y-N	LC3237Y-N	
BR4	BR3	Brother	AJB-LC3239BK-N	LC3239BK-N	Brother DCP-J1100DW/MFC-J1300
			AJB-LC3239C-N	LC3239C-N	
			AJB-LC3239M-N	LC3239M-N	
			AJB-LC3239Y-N	LC3239Y-N	
			AJB-LC3333BK-N	LC3333BK-N	Brother MFC-J6945DW/J5945DW
			AJB-LC3333C-N	LC3333C-N	
			AJB-LC3333M-N	LC3333M-N	
			AJB-LC3333Y-N	LC3333Y-N	
			AJB-LC3335BK-N	LC3335BK-N	
			AJB-LC3335C-N	LC3335C-N	
			AJB-LC3335M-N	LC3335M-N	Brother MFC-J6999CDW/ J6997CDW/HL-J6000CDW
			AJB-LC3335Y-N	LC3335Y-N	
			AJB-LC3337BK-N	LC3337BK-N	
			AJB-LC3337C-N	LC3337C-N	
			AJB-LC3337M-N	LC3337M-N	Brother DCP-J1100DW/MFC-J1300
			AJB-LC3337Y-N	LC3337Y-N	
AJB-LC3339BK-N	LC3339BK-N				
AJB-LC3339C-N	LC3339C-N				
AJB-LC3339M-N	LC3339M-N				
AJB-LC3339Y-N	LC3339Y-N				

			AJB-LC3033BK-N-S	LC3033BK-N-S	Brother MFC-J995DW
			AJB-LC3033C-N-S	LC3033C-N-S	
			AJB-LC3033M-N-S	LC3033M-N-S	
			AJB-LC3033Y-N-S	LC3033Y-N-S	
			AJB-LC3035BK-N-S	LC3035BK-N-S	Brother MFC-J1500N/DCP-J988N
			AJB-LC3035C-N-S	LC3035C-N-S	
			AJB-LC3035M-N-S	LC3035M-N-S	
			AJB-LC3035Y-N-S	LC3035Y-N-S	
			AJB-LC3037BK-N-S	LC3037BK-N-S	Brother DCP-J1100DW/MFC-J1300
			AJB-LC3037C-N-S	LC3037C-N-S	
			AJB-LC3037M-N-S	LC3037M-N-S	
			AJB-LC3037Y-N-S	LC3037Y-N-S	
			AJB-LC3038BK-N-S	LC3037/39BK-N-S	Brother MFC-J5845DW/ J5945DW/J6545DW/J6945DW
			AJB-LC3038C-N-S	LC3037/39C-N-S	
			AJB-LC3038M-N-S	LC3037/39M-N-S	
			AJB-LC3038Y-N-S	LC3037/39Y-N-S	
			AJB-LC3133BK-N-S	LC3133BK-N-S	Brother MFC-J6999CDW/ J6997CDW/HL-J6000CDW
			AJB-LC3133C-N-S	LC3133C-N-S	
			AJB-LC3133M-N-S	LC3133M-N-S	
			AJB-LC3133Y-N-S	LC3133Y-N-S	
AJB-LC3135BK-N-S	LC3135BK-N-S	Brother MFC-J5845DW/ J5945DW/J6545DW/J6945DW			
AJB-LC3135C-N-S	LC3135C-N-S				
AJB-LC3135M-N-S	LC3135M-N-S				
AJB-LC3135Y-N-S	LC3135Y-N-S				
BR4	BR3	Brother	AJB-LC3137BK-N-S	LC3137BK-N-S	Brother HL-J6000DW/J6100DW/ MFC-J5945DW/J6945DW/J6947DW
			AJB-LC3137C-N-S	LC3137C-N-S	
			AJB-LC3137M-N-S	LC3137M-N-S	
			AJB-LC3137Y-N-S	LC3137Y-N-S	
			AJB-LC3138BK-N-S	LC3139BK-N-S	Brother MFC-J6945DW/J5945DW
			AJB-LC3138C-N-S	LC3139C-N-S	
			AJB-LC3138M-N-S	LC3139M-N-S	
			AJB-LC3138Y-N-S	LC3139Y-N-S	
			AJB-LC3233BK-N-S	LC3233BK-N-S	Brother DCP-J1100DW/MFC-J1300
			AJB-LC3233C-N-S	LC3233C-N-S	
			AJB-LC3233M-N-S	LC3233M-N-S	
			AJB-LC3233Y-N-S	LC3233Y-N-S	

OEM Chip Reset Operating Instruction



		AJB-LC3235BK-N-S	LC3235BK-N-S	Brother MFC-J995DW
		AJB-LC3235C-N-S	LC3235C-N-S	
		AJB-LC3235M-N-S	LC3235M-N-S	
		AJB-LC3235Y-N-S	LC3235Y-N-S	
		AJB-LC3237BK-N-S	LC3237BK-N-S	Brother MFC-J1500N/DCP-J988N
		AJB-LC3237C-N-S	LC3237C-N-S	
		AJB-LC3237M-N-S	LC3237M-N-S	
		AJB-LC3237Y-N-S	LC3237Y-N-S	
		AJB-LC3238BK-N-S	LC3239BK-N-S	Brother DCP-J1100DW/MFC-J1300
		AJB-LC3238C-N-S	LC3239C-N-S	
		AJB-LC3238M-N-S	LC3239M-N-S	
		AJB-LC3238Y-N-S	LC3239Y-N-S	
		AJB-LC3333BK-N-S	LC3333BK-N-S	
		AJB-LC3333C-N-S	LC3333C-N-S	
		AJB-LC3333M-N-S	LC3333M-N-S	
		AJB-LC3333Y-N-S	LC3333Y-N-S	
		AJB-LC3335BK-N-S	LC3335BK-N-S	Brother MFC-J6999CDW/ J6997CDW/HL-J6000CDW
		AJB-LC3335C-N-S	LC3335C-N-S	
		AJB-LC3335M-N-S	LC3335M-N-S	
		AJB-LC3335Y-N-S	LC3335Y-N-S	
		AJB-LC3337BK-N-S	LC3337BK-N-S	Brother HL-J6000DW/J6100DW/ MFC-J5945DW/J6945DW/J6947DW
		AJB-LC3337C-N-S	LC3337C-N-S	
		AJB-LC3337M-N-S	LC3337M-N-S	
		AJB-LC3337Y-N-S	LC3337Y-N-S	
		AJB-LC3338BK-N-S	LC3339BK-N-S	Brother MFC-J6945DW/J5945DW
		AJB-LC3338C-N-S	LC3339C-N-S	
		AJB-LC3338M-N-S	LC3339M-N-S	
		AJB-LC3338Y-N-S	LC3339Y-N-S	

"Apex" herein refers to Apex Microelectronics Co., Ltd. The information contained herein is subject to change without prior notification. Apex shall not be liable for technical or editorial errors or omissions contained herein. Photographed products may not always match the description.