

## Uni Ricoh 3502 OEM 芯片复位操作说明 V1.0

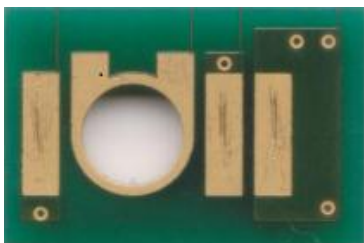
### 目录

1、复位技术特征 .....	2
2、Ricoh 3502 芯片及对应的读写头 .....	2
3、设备操作 .....	2
4、复位注意事项 .....	3
5、代码提示及具体含义 .....	4
6、型号对照表 .....	错误!未定义书签。

## 1. 复位技术特征

自动识别型号，原型号复位，不能改变颜色、容量、区域；

## 2. Ricoh 3502 系列芯片及对应的读写头



芯片



测试头

## 3. 设备操作

OEM 复位&、OEM 检查、OEM 扫描

确保测试头与芯片触点对位正确。



图 1


在主界面点击扫描  按键即可。



图 2

扫描成功后，即可进入芯片最终操作界面。根据需求，点击切换“RESET”“CHECK”“SCAN”功能，按测试头或主机上的确认键，即可进行对芯片操作；



图 3

注：扫描按键只能在主界面和最终界面进行对芯片扫描诊断功能。  
 以上为“MP-C3503”代表的操作，其它型号的操作依此类推。

#### 4. 复位注意事项

- ◆ Ricoh 3502 系列产品根据不同区域不同容量型号比较多，我司回收的墨盒并未覆盖所有的型号，所以可能存在部分型号在使用 Unismart 设备 Scan 或者 Reset 时无法显示具体的颜色、区域、容量，只显示“RST-Ricoh-3502”，此类型号复位后也是可以正常使用的，具体型号可以参考下图蓝色圈中的数字码进行装机测试；
- ◆ Unismart 采用原型号复位，只复位墨量不改变序列号，通过测试发现，打印机只记忆一套序列号，使用另外一套序列号可以覆盖掉，终端客户需要有 2 套以上的硒鼓，才能使用 Unismart 复位；



图 4

## 5. 代码提示及具体含义

代码提示	具体含义	分析原因
Chip Already OK	芯片复位 OK	/
Operation failed	芯片操作失败	① 芯片损坏； ② 测试头探针没有准确对位芯片触点； ③ 测试头方向放反。
Operation succeeded	芯片操作成功	/
Chip not match	芯片不匹配	需要复位的芯片不能选择当前型号
Data not match	数据不匹配	① 芯片已经装机并被打印机改写了数据； ② 客户在 Unismart 中选则的型号与要检测的芯片型号不一致。
Chip is locked	芯片已被锁	/
Chip's useful life is over	芯片寿命用尽	/
Brand new chip	芯片已经是全新	/
No chip detected	没有检测到芯片	/
Wrong JIG ID	用错测试头	/
Not found JIG	没有找到测试头	/

## 6. 复位型号对照表

PCB code	Jig	Brand	Apex Product Code	OEM Product Code	Color	Yield	Region	For Use with
PCB-B44	H18	RICOH	ALR-C2503HK-AU	MP-C2503/841932	BK	15K	AU	Ricoh MP C2003/MP C2503/ MP C2004/MP C2504
PCB-B44	H18	RICOH	ALR-C2503HC-AU	MP-C2503H/841935	C	9.5K		
PCB-B44	H18	RICOH	ALR-C2503HM-AU	MP-C2503H/841934	M	9.5K		
PCB-B44	H18	RICOH	ALR-C2503HY-AU	MP-C2503H/841933	Y	9.5K		
PCB-B44	H18	RICOH	ALR-C2503HK-EU R	MP-C2503/841925	BK	15K	EUR	
PCB-B44	H18	RICOH	ALR-C2503HC-EU R	MP-C2503H/841928	C	9.5K		
PCB-B44	H18	RICOH	ALR-C2503HM-EU R	MP-C2503H/841927	M	9.5K		
PCB-B44	H18	RICOH	ALR-C2503HY-EU R	MP-C2503H/841926	Y	9.5K		
PCB-B44	H18	RICOH	ALR-C2503HK-NA	MP-C2503/841918	BK	15K	NA	
PCB-B44	H18	RICOH	ALR-C2503HC-NA	MP-C2503H/841921	C	9.5K		
PCB-B44	H18	RICOH	ALR-C2503HM-NA	MP-C2503H/841920	M	9.5K		
PCB-B44	H18	RICOH	ALR-C2503HY-NA	MP-C2503H/841919	Y	9.5K		
PCB-B44	H18	RICOH	ALR-C2503HK-CH N	MP-C2503/841946	BK	15K	CHN	
PCB-B44	H18	RICOH	ALR-C2503C-JP	MP-C2503/600284	C	5.5K	JP	
PCB-B44	H18	RICOH	ALR-C2503M-JP	MP-C2503/600283	M	5.5K		
PCB-B44	H18	RICOH	ALR-C2503Y-JP	MP-C2503/600282	Y	5.5K		
PCB-B44	H18	RICOH	ALR-C2503C-NA	MP-C2503/841924	C	5.5K	NA	
PCB-B44	H18	RICOH	ALR-C2503M-NA	MP-C2503/841923	M	5.5K		
PCB-B44	H18	RICOH	ALR-C2503Y-NA	MP-C2503/841922	Y	5.5K		
PCB-B44	H18	RICOH	ALR-C3503K-AU	MP-C3503/841829	BK	29.5K	AU	
PCB-B44	H18	RICOH	ALR-C3503C-AU	MP-C3503/841832	C	18K		
PCB-B44	H18	RICOH	ALR-C3503M-AU	MP-C3503/841831	M	18K		
PCB-B44	H18	RICOH	ALR-C3503Y-AU	MP-C3503/841830	Y	18K		
PCB-B44	H18	RICOH	ALR-C3503K-CHN	MP-C3503/841841	BK	29.5K	CHN	
PCB-B44	H18	RICOH	ALR-C3503C-CHN	MP-C3503/841844	C	18K		
PCB-B44	H18	RICOH	ALR-C3503M-CHN	MP-C3503/841843	M	18K		
PCB-B44	H18	RICOH	ALR-C3503Y-CHN	MP-C3503/841842	Y	18K		
PCB-B44	H18	RICOH	ALR-C3503K-EUR	MP-C3503/841817	BK	29.5K	EUR	
PCB-B44	H18	RICOH	ALR-C3503C-EUR	MP-C3503/841820	C	18K		
PCB-B44	H18	RICOH	ALR-C3503M-EUR	MP-C3503/841819	M	18K		
PCB-B44	H18	RICOH	ALR-C3503Y-EUR	MP-C3503/841818	Y	18K		
PCB-B44	H18	RICOH	ALR-C3503K-JP	MP-C3503/600249	BK	29.5K	JP	
PCB-B44	H18	RICOH	ALR-C3503C-JP	MP-C3503/600252	C	18K		
PCB-B44	H18	RICOH	ALR-C3503M-JP	MP-C3503/600251	M	18K		
PCB-B44	H18	RICOH	ALR-C3503Y-JP	MP-C3503/600250	Y	18K		

# Ricoh 3502 OEM 芯片复位操作说明



PCB-B44	H18	RICOH	ALR-C3503K-NA	MP-C3503/841813	BK	29.5K	NA	Ricoh MP C5503/MP C4503/ MP C6003/MP C4504/ MP C5504/MP C6004		
PCB-B44	H18	RICOH	ALR-C3503C-NA	MP-C3503/841816	C	18K			NA	
PCB-B44	H18	RICOH	ALR-C3503M-NA	MP-C3503/841815	M	18K				NA
PCB-B44	H18	RICOH	ALR-C3503Y-NA	MP-C3503/841814	Y	18K				
PCB-B44	H18	RICOH	ALR-C6003K-AU	MP-C6003/841865	BK	33K	AU			
PCB-B44	H18	RICOH	ALR-C6003C-AU	MP-C6003/841868	C	22.5K			AU	
PCB-B44	H18	RICOH	ALR-C6003M-AU	MP-C6003/841867	M	22.5K				AU
PCB-B44	H18	RICOH	ALR-C6003Y-AU	MP-C6003/841866	Y	22.5K				
PCB-B44	H18	RICOH	ALR-C6003K-CHN	MP-C6003/841877	BK	33K	CHN			
PCB-B44	H18	RICOH	ALR-C6003C-CHN	MP-C6003/841880	C	22.5K			CHN	
PCB-B44	H18	RICOH	ALR-C6003M-CHN	MP-C6003/841879	M	22.5K				CHN
PCB-B44	H18	RICOH	ALR-C6003Y-CHN	MP-C6003/841878	Y	22.5K				
PCB-B44	H18	RICOH	ALR-C6003K-EUR	MP-C6003/841853	BK	33K	EUR			
PCB-B44	H18	RICOH	ALR-C6003C-EUR	MP-C6003/841856	C	22.5K			EUR	
PCB-B44	H18	RICOH	ALR-C6003M-EUR	MP-C6003/841855	M	22.5K				EUR
PCB-B44	H18	RICOH	ALR-C6003Y-EUR	MP-C6003/841854	Y	22.5K				
PCB-B44	H18	RICOH	ALR-C6003K-NA	MP-C6003/841849	BK	33K	NA			
PCB-B44	H18	RICOH	ALR-C6003C-NA	MP-C6003/841852	C	22.5K		NA		
PCB-B44	H18	RICOH	ALR-C6003M-NA	MP-C6003/841851	M	22.5K			NA	
PCB-B44	H18	RICOH	ALR-C6003Y-NA	MP-C6003/841850	Y	22.5K				NA
PCB-B44	H18	RICOH	ALR-C6003K-JP	MP-C6003/600244	BK	33K	JP			
PCB-B44	H18	RICOH	ALR-C6003C-JP	MP-C6003/600245	C	22.5K		JP		
PCB-B44	H18	RICOH	ALR-C6003M-JP	MP-C6003/600246	M	22.5K			JP	
PCB-B44	H18	RICOH	ALR-C6003Y-JP	MP-C6003/600247	Y	22.5K				JP
PCB-B44	H18	RICOH	ALR-C406K-CHN	MP-C406/842111	BK	17K	CHN			
PCB-B44	H18	RICOH	ALR-C406C-CHN	MP-C406/842112	C	6K		CHN		
PCB-B44	H18	RICOH	ALR-C406M-CHN	MP-C406/842113	M	6K			CHN	
PCB-B44	H18	RICOH	ALR-C406Y-CHN	MP-C406/842114	Y	6K				CHN
PCB-B44	H18	RICOH	ALR-C406K-EUR	MP-C406/842095	BK	17K	EUR			
PCB-B44	H18	RICOH	ALR-C406C-EUR	MP-C406/842096	C	6K		EUR		
PCB-B44	H18	RICOH	ALR-C406M-EUR	MP-C406/842097	M	6K			EUR	
PCB-B44	H18	RICOH	ALR-C406Y-EUR	MP-C406/842098	Y	6K				EUR
PCB-B44	H18	RICOH	ALR-C406K-NA	MP-C406/842091	BK	17K	NA			
PCB-B44	H18	RICOH	ALR-C406C-NA	MP-C406/842092	C	6K		NA		
PCB-B44	H18	RICOH	ALR-C406M-NA	MP-C406/842093	M	6K			NA	
PCB-B44	H18	RICOH	ALR-C406Y-NA	MP-C406/842094	Y	6K				NA
PCB-B44	H18	RICOH	ALR-C406K-JP	MP-C406/600342	BK	17K	JP			
PCB-B44	H18	RICOH	ALR-C406C-JP	MP-C406/600343	C	6K		JP		
PCB-B44	H18	RICOH	ALR-C406M-JP	MP-C406/600344	M	6K			JP	
PCB-B44	H18	RICOH	ALR-C406Y-JP	MP-C406/600345	Y	6K				JP
PCB-B44	H18	RICOH	ALR-C407K-NA	MP-C407/842207	BK	17.5K	WW			
PCB-B44	H18	RICOH	ALR-C407C-NA	MP-C407/842208	C	8K		WW		
PCB-B44	H18	RICOH	ALR-C407M-NA	MP-C407/842209	M	8K			WW	
PCB-B44	H18	RICOH	ALR-C407Y-NA	MP-C407/842210	Y	8K				WW



# Ricoh 3502 OEM 芯片复位操作说明



PCB-B44	H18	RICOH	ALR-C840HK-JP	SP-C840H/600637	BK	25K	JP	Ricoh SP C841/C841M/C840/C840M
PCB-B44	H18	RICOH	ALR-C840HC-JP	SP-C840H/600634	C	20K		
PCB-B44	H18	RICOH	ALR-C840HM-JP	SP-C840H/600635	M	20K		
PCB-B44	H18	RICOH	ALR-C840HY-JP	SP-C840H/600636	Y	20K		
PCB-B44	H18	RICOH	ALR-C840AK-JP	SP-C840A/821255	BK	43K	WW (ex.JP)	Ricoh SP C840DN/SP C842DN
PCB-B44	H18	RICOH	ALR-C840AC-JP	SP-C840A/821258	C	34K		
PCB-B44	H18	RICOH	ALR-C840AM-JP	SP-C840A/821257	M	34K		
PCB-B44	H18	RICOH	ALR-C840AY-JP	SP-C840A/821256	Y	34K		
PCB-B44	H18	RICOH	ALR-C840K-JP	SP-C840/600633	BK	12K	JP	Ricoh SP C841/C841M/C840/C840M
PCB-B44	H18	RICOH	ALR-C840C-JP	SP-C840/600630	C	12K		
PCB-B44	H18	RICOH	ALR-C840M-JP	SP-C840/600631	M	12K		
PCB-B44	H18	RICOH	ALR-C840Y-JP	SP-C840/600632	Y	12K		
PCB-B44	H18	RICOH	ALR-C830HK-NA	SP-C830H/821181	BK	23.5K	WW (ex.JP)	
PCB-B44	H18	RICOH	ALR-C830HC-NA	SP-C830H/821184	C	27K		
PCB-B44	H18	RICOH	ALR-C830HM-NA	SP-C830H/821183	M	27K		
PCB-B44	H18	RICOH	ALR-C830HY-NA	SP-C830H/821182	Y	27K		
PCB-B44	H18	RICOH	ALR-C830HK-JP	SP-C830H/600514	BK	25K	JP	Ricoh IPSiO SP C831/831M/C830/830M
PCB-B44	H18	RICOH	ALR-C830HC-JP	SP-C830H/600517	C	20K		
PCB-B44	H18	RICOH	ALR-C830HM-JP	SP-C830H/600516	M	20K		
PCB-B44	H18	RICOH	ALR-C830HY-JP	SP-C830H/600515	Y	20K		
PCB-B44	H18	RICOH	ALR-C830K-JP	SP-C830/600518	BK	12K		
PCB-B44	H18	RICOH	ALR-C830C-JP	SP-C830/600521	C	12K		
PCB-B44	H18	RICOH	ALR-C830M-JP	SP-C830/600520	M	12K		
PCB-B44	H18	RICOH	ALR-C830Y-JP	SP-C830/600519	Y	12K		
PCB-B44	H18	RICOH	ALR-C830K-NA	SP-C830/821149	BK	12K	WW ex.JP)	
PCB-B44	H18	RICOH	ALR-C830C-NA	SP-C830/821152	C	12K		
PCB-B44	H18	RICOH	ALR-C830M-NA	SP-C830/821151	M	12K		
PCB-B44	H18	RICOH	ALR-C830Y-NA	SP-C830/821150	Y	12K		
PCB-B44	H18	RICOH	ALR-C305HK-CHN	MP-C305H/841633	BK	12K	CHN	
PCB-B44	H18	RICOH	ALR-C305HC-CHN	MP-C305H/841625	C	4K		
PCB-B44	H18	RICOH	ALR-C305HM-CHN	MP-C305H/841626	M	4K		
PCB-B44	H18	RICOH	ALR-C305HY-CHN	MP-C305H/841627	Y	4K		
PCB-B44	H18	RICOH	ALR-C305HK-EUR	MP-C305H/842079	BK	12K	EUR	
PCB-B44	H18	RICOH	ALR-C305HC-EUR	MP-C305H/842082	C	4K		
PCB-B44	H18	RICOH	ALR-C305HM-EUR	MP-C305H/842081	M	4K		
PCB-B44	H18	RICOH	ALR-C305HY-EUR	MP-C305H/841627	Y	4K		
PCB-B44	H18	RICOH	ALR-C305HK-NA	MP-C305H/842119	BK	12K	NA	Ricoh Aficio MP C305spf
PCB-B44	H18	RICOH	ALR-C305HC-NA	MP-C305H/841122	C	4K		
PCB-B44	H18	RICOH	ALR-C305HM-NA	MP-C305H/841121	M	4K		
PCB-B44	H18	RICOH	ALR-C305HY-NA	MP-C305H/841120	Y	4K		
PCB-B44	H18	RICOH	ALR-C305HK-JP	MP-C305H/600273	BK	12K	JP	
PCB-B44	H18	RICOH	ALR-C305HC-JP	MP-C305H/600274	C	4K		
PCB-B44	H18	RICOH	ALR-C305HM-JP	MP-C305H/600275	M	4K		
PCB-B44	H18	RICOH	ALR-C305HY-JP	MP-C305H/600276	Y	4K		

# Ricoh 3502 OEM 芯片复位操作说明



PCB-B44	H18	RICOH	ALR-1803K-JP	MP-C1803/600286	BK	3K	JP	Ricoh MP C1803	
PCB-B44	H18	RICOH	ALR-1803C-JP	MP-C1803/600287	C	1.4K			
PCB-B44	H18	RICOH	ALR-1803M-JP	MP-C1803/600288	M	1.4K			
PCB-B44	H18	RICOH	ALR-1803Y-JP	MP-C1803/600289	Y	1.4K			
PCB-B44	H18	RICOH	ALR-C3502K-CHN	MP-C3502/841675	BK	28K	CHN	Ricoh MPC3002/MPC3502	
PCB-B44	H18	RICOH	ALR-C3502C-CHN	MP-C3502/841678	C	18K			
PCB-B44	H18	RICOH	ALR-C3502M-CHN	MP-C3502/841677	M	18K			
PCB-B44	H18	RICOH	ALR-C3502Y-CHN	MP-C3502/841676	Y	18K			
PCB-B44	H18	RICOH	ALR-C3502K-NA	MP-C3502/841735	BK	28K	NA		
PCB-B44	H18	RICOH	ALR-C3502C-NA	MP-C3502/841738	C	18K			
PCB-B44	H18	RICOH	ALR-C3502M-NA	MP-C3502/841737	M	18K			
PCB-B44	H18	RICOH	ALR-C3502Y-NA	MP-C3502/841736	Y	18K			
PCB-B44	H18	RICOH	ALR-C5502K-CHN	MP-C5502/841707	BK	31K	CHN		
PCB-B44	H18	RICOH	ALR-C5502C-CHN	MP-C5502/841710	C	22.5K			
PCB-B44	H18	RICOH	ALR-C5502M-CHN	MP-C5502/841709	M	22.5K			
PCB-B44	H18	RICOH	ALR-C5502Y-CHN	MP-C5502/841708	Y	22.5K			
PCB-B44	H18	RICOH	ALR-C5502K-EUR	MP-C5502/842020	BK	31K	EUR		
PCB-B44	H18	RICOH	ALR-C5502C-EUR	MP-C5502/842023	C	22.5K			
PCB-B44	H18	RICOH	ALR-C5502M-EUR	MP-C5502/842022	M	22.5K			
PCB-B44	H18	RICOH	ALR-C5502Y-EUR	MP-C5502/842021	Y	22.5K			
PCB-B44	H18	RICOH	ALR-C5502K-NA	MP-C5502/841751	BK	31K	NA		
PCB-B44	H18	RICOH	ALR-C5502C-NA	MP-C5502/841754	C	22.5K			
PCB-B44	H18	RICOH	ALR-C5502M-NA	MP-C5502/841753	M	22.5K			
PCB-B44	H18	RICOH	ALR-C5502Y-NA	MP-C5502/841752	Y	22.5K			
PCB-B44	H18	RICOH	ALR-C8003K-NA	MP-C8003/842196	BK	47K	NA	Ricoh MP C8003/C6503	
PCB-B44	H18	RICOH	ALR-C8003C-NA	MP-C8003/842199	C	26K			
PCB-B44	H18	RICOH	ALR-C8003M-NA	MP-C8003/842198	M	26K			
PCB-B44	H18	RICOH	ALR-C8003Y-NA	MP-C8003/842197	Y	26K			
PCB-B44	H18	RICOH	ALR-C8003K-JP	MP-C8003/600375	BK	47K	JP		
PCB-B44	H18	RICOH	ALR-C8003C-JP	MP-C8003/600377	C	26K			
PCB-B44	H18	RICOH	ALR-C8003M-JP	MP-C8003/600378	M	26K			
PCB-B44	H18	RICOH	ALR-C8003Y-JP	MP-C8003/600376	Y	26K			
PCB-B44	H18	RICOH	ALR-C5200K-NA	C5200/828422	BK	33K	NA		Ricoh Pro C5200S/Pro C5210S
PCB-B44	H18	RICOH	ALR-C5200C-NA	C5200/828425	C	24K			
PCB-B44	H18	RICOH	ALR-C5200M-NA	C5200/828424	M	24K			
PCB-B44	H18	RICOH	ALR-C5200Y-NA	C5200/828423	Y	24K			
PCB-B44	H18	RICOH	ALR-C5200K-JP	C5200/600379	BK	33K	JP		
PCB-B44	H18	RICOH	ALR-C5200C-JP	C5200/600382	C	24K			
PCB-B44	H18	RICOH	ALR-C5200M-JP	C5200/600381	M	24K			
PCB-B44	H18	RICOH	ALR-C5200Y-JP	C5200/600380	Y	24K			



PCB-B44	H19	RICOH	UNKNOWN	RST-Ricoh-3502				Ricoh Aficio MPC305spf/C306/ C406/C307/C407spf/C1803/ C2003/C2503/C2004/C2504/ C3002/C3003/C3502/C3503/ C3004/C3504/C4502/C4503/ C4504/C5502/C5503/C5504/ C6003/C6004/C6502sp/C6503/ C8002sp/C8003/SP C830/830M/ C831/831M/C841/a1/C841M/a1/ C840/a1/C840M/a1/C840DN/C84 2DN/Pro C5100S/C5110S/ C5200S/C5210S
---------	-----	-------	---------	----------------	--	--	--	--

珠海艾派克微电子有限公司保留产品设计与规格的变更权利，届时恕不另行通知；资料内产品与实物有轻微差别，请以实物为准；所有资料经过仔细校对，如有任何印刷错误本公司不承担因此产生之后果；本公司保留以上宣传数据解释权。所有出现的其他产品或品牌名称是其各自所有者的商标或注册商标。